

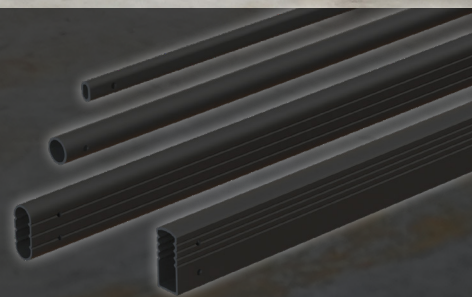




mccue.com 
SalesUS@mccue.com 
(800) 800-8503 



SAFESTOP ***FREEZE LINE***



**FLEXIBLE RAILS PROVIDE THE ULTIMATE STOPPING
POWER – EVEN IN SUB-ZERO ENVIRONMENTS**

**KEEP YOUR OPERATIONS SAFE AND YOUR WORKFORCE SAFER WITH THE WORLD'S MOST
ADVANCED SAFETY BARRIERS — SPEAK TO A SAFETY SPECIALIST TODAY (800) 800-8503**



SAFER IMPACTS:

Proprietary rail connection provides unparalleled impact absorbency – even the cold!

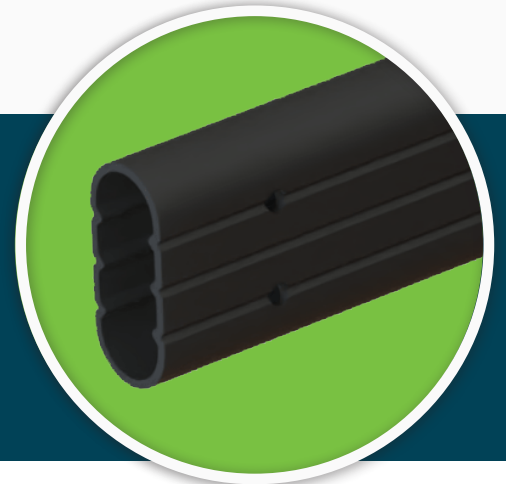
STOPPING POWER:

Industry-leading strength from shock-absorbing technology.

EASY-TO-CONFIGURE:

Modular rails and connectors allow for endless configurations.

SAFESTOP ***FREEZE LINE***



	Working Temperatures	-20°F to 32°F (-29°C to 0°C)
	Toxicity	Not Hazardous

	Flammability	Does Not Easily Ignite
	REACH / TSCA / DSL	Compliant

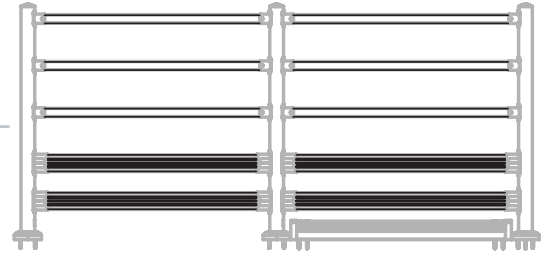
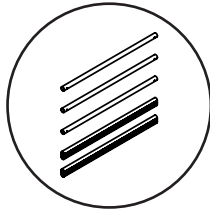
* PATENTS PENDING

SAFESTOP *FREEZE LINE*

SafeStop TopplesBarrier Freeze Line

KIT NUMBER:
TB-K-RAL-CLD-120-401

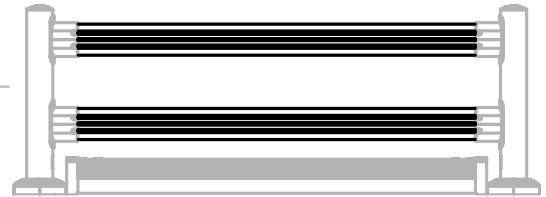
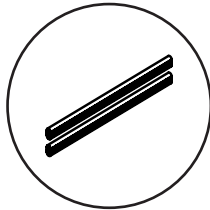
Hardware included.



SafeStop GuardRail Freeze Line

KIT NUMBER:
SGR-K-RAL-CLD-120-401

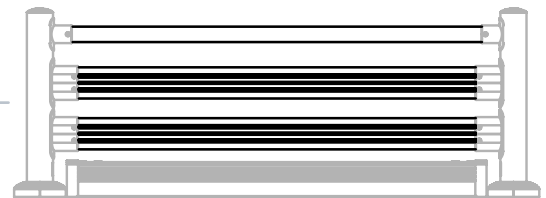
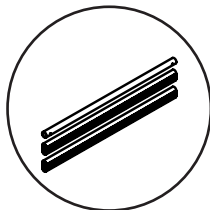
Hardware included.



SafeStop Pedestrian GuardRail Freeze Line

KIT NUMBER:
PGR-K-RAL-CLD-120-401

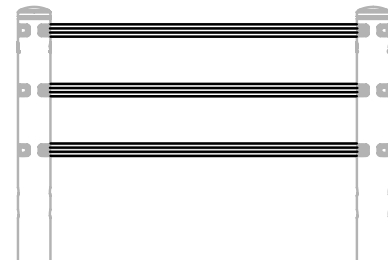
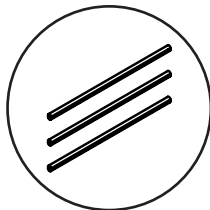
Hardware included.



SafeStop PedestrianBarrier Freeze Line

KIT NUMBER:
PB-K-RAL-CLD-401

Hardware included.

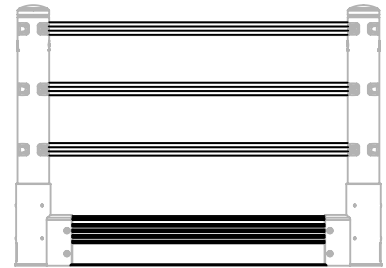
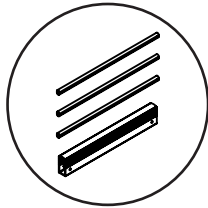


SAFESTOP *FREEZE LINE*

SafeStop PedestrianBarrier with GroundBarrier Freeze Line

KIT NUMBER:
PBG-K-RAL-CLD-401

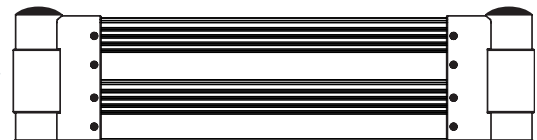
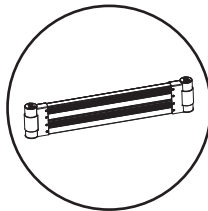
Hardware included.



SafeStop RackEnd Protector Double Freeze Line

KIT NUMBER:
RPD-K-120-CLD-401

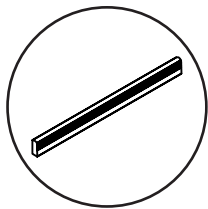
Hardware included.



SafeStop GroundBarrier Freeze Line

PART NUMBER:
GB-C-RAL-CLD-120-401

Hardware included.



SafeStop FloorGuard Add-On Freeze Line

KIT NUMBER:
FG-K-120-CLD-401

Hardware included.

